

COMMUNITY PLANNING NEWSLETTER

Nov. 2022



Mahalo for reading our Community Planning newsletter!

This newsletter is intended to highlight active community planning efforts in our Department and across the island. We hope to continue promoting these ongoing efforts by providing visibility for initiatives that support positive future growth of our County. We look forward to our continued collaboration, as we imagine a future rooted in love for our ‘āina and our people.

WHAT'S HAPPENING IN OUR COMMUNITY?

Vibrant Hawai'i



Resilience Hubs were first launched in 2019 as a response to COVID-19 to build human and social relationships and develop resilient communities.

You can find Resiliency Hubs around the island that provide opportunities to participate and support your community. The Vibrant Hawai'i website also includes a variety of resources, meeting events, and topic-based streams where you can learn more about how to get involved in the issues you care most about.

Vibrant Hawai'i
[vibranthawaii.org]



Hawai'i Island
Resilience Hub
Mapping
Initiative

-  Phase I Resilience Hubs
-  Phase II Resilience Hubs



Ka'ū Dream

Purpose is to honor the authenticity and traditions of Ka'ū, while building a resilient community. Their model includes hands-on learning opportunities, workforce development, celebration of arts and culture, agriculture-based economic development, infrastructure advocacy, career pathways, and more.

Check out their website for more information and join their mailing list to be informed on upcoming events and ways to participate.

Ka'ū Dream
[kaudream.org]

Hui Mālama i ke Ala 'Ūlili (huiMAU)

“Committed to cultivating kīpuka (safe, regenerative spaces) that foster and regenerate the growth of place-based ancestral knowledge, healthy food- and eco-systems, and strong ‘ohana with the capacity to live and thrive in Hāmākua for generations.”

Check out their website to learn more about their youth after-school and summer educational programs, along with other community events and activities.

Pictured: the 'Umi-a-Līloa Mural Project at the Pa'auilo Elementary & Middle School self-sustainability.

HuiMAU Website
[alaulili.com]



Hāmākua CDP – Community Objectives 4, 8, 11, 12



South Kohala Coastal Partnership (SKCP)

A collaboration of various community groups and organizations working to restore a healthy, abundant, and resilient South Kohala coastal system.

There are several ways to get involved from tree planting events to beach clean-ups. Malama the 'āina, learn, and have fun while you do it!

SKCP Website
[southkhalacoastalpartners.com]

South Kohala CDP: General Policy 5, Kawaihae Policy 3, Puakō Policy 3

Revitalize Puna

Created in response to the 2018 Kīlauea Eruption, these events are community activations that bring County & Puna residents together.

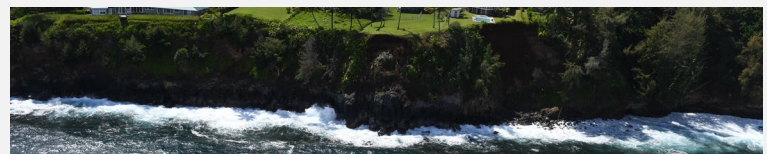
Join their mailing list to get notified about their next quarterly event

Revitalize Puna
[recovery.hawaiicounty.gov]

Paint Pāhoa Town

Painting will continue through December 2022

Volunteer to Paint or Donate
[bit.ly/paintpahoa]



Shoreline Pursuit: Analysis to Establish Research-based Shoreline and Riparian Setback Amendments

Purpose of this multi-phase project is to analyze coastal and riparian areas in order to adopt more effective adaptation and mitigation policies. With a genesis in Hāmākua, the project has broadened across the island thanks to multi-sector partnerships and funding sources.

Outcomes will result in more effective coastal zone management tools, including targeted setback strategies and protective regulations as well as deeper understanding of our varied, beautiful and ever-changing coastal landforms.

Planner: Kevin Sullivan, AICP

State and County partnerships to facilitate place-based shoreline management strategies:

County Profiles Storymap
[https://arcg.is/1H8K9q]

Hāmākua CDP – Policy 18, 20, 40; Kona CDP - LU-1.5&1.6, ENV-1.7; Ka'u CDP - Policy 23, 24, 25, 28, 29, 30, 31

Kona Open Space Network (KOSN)

The KOSN planning effort will be kicking off soon. It is intended to identify opportunities for residents to engage in natural, recreational, educational, subsistence, and gathering activities.

Planner: Natasha Soriano

Join our Kona CDP mailing list to be informed about upcoming opportunities to participate!

KCDP Mailing List
[vision.hawaiicounty.gov]

Kona CDP - Policy ENV-2.1, 3.1, 3.2; CR-1.1(2); PUB-6.4



Hawai'i Island Housing Coalition [Vibrant Hawai'i]

The Annual Statewide Homelessness Awareness and Housing Solutions conference is being held from November 15-19.

"We can't do housing first without housing first!"

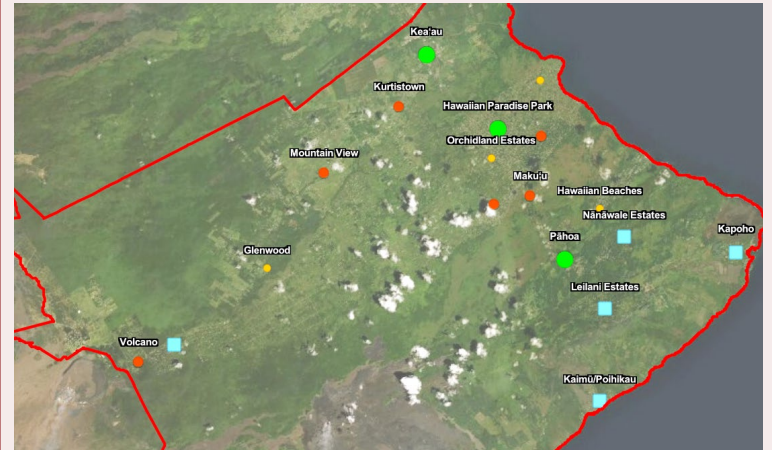
A public forum is being hosted on Nov 15 from 4-6pm at the Imiloa Astronomy Center

Register for Free
[partnersincareoahu.org]

Volunteers are needed for the January 2023 Point-in-Time Count. The Point-In-Time Count (PIT) provides an estimate of homelessness on a specific night during the last ten days of January each year.

Volunteers canvass the island and are paired with professional service providers and advocates who work with the homeless. There are two shifts; morning and afternoon. Learn first-hand about why people are homeless by volunteering to be a canvasser.

For more information contact: Carrie Ho'opi'i at choopii@hopeserviceshaawaii.org.



Puna Wastewater Feasibility Study

The County of Hawai'i, Department of Environmental Management is evaluating the feasibility of and potential locations for the addition of wastewater services and facilities for the Puna District in the context of the Kīlauea Eruption Recovery planning process.

Project Coordinator: Kelly Hartman

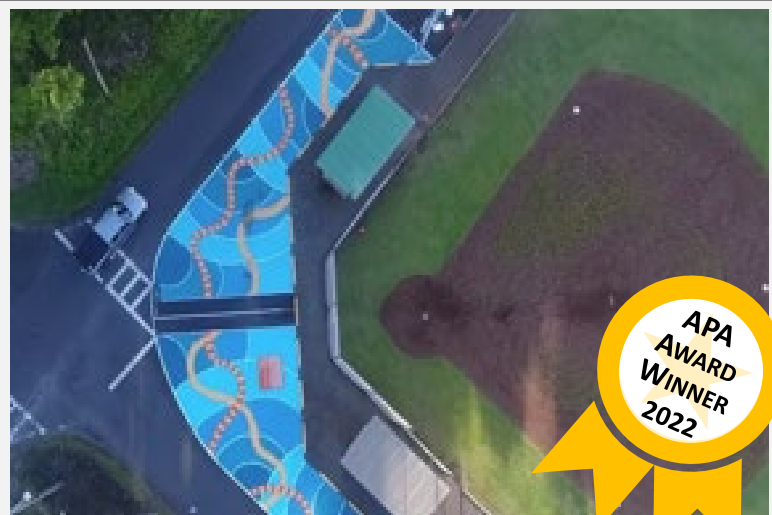
Puna Wastewater Storymap
[<https://arcg.is/10j4bW1>]

Keaukaha Quick Build Project

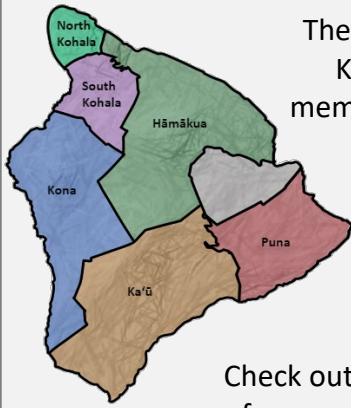
The Planning Department collaborated with community organizations, artists and volunteers to install a "Quick Build" Project near Keaukaha Elementary School. The main goal was to improve the health, safety and happiness of residents and students by reconfiguring existing areas with Complete Streets management, including safe places to walk and bike.

Planner: Natasha Soriano

KeaukahaQuick Build Video
[<https://vimeo.com/733805542>]



Community Development Plan Action Committees



The Hāmākua, Ka'ū, and South Kohala Action Committee members have hosted their own official meetings. Action Committees serve their communities through grass-roots efforts to implement Community Development Plans (CDPs).

Check out the CDP website and sign up for our mailing list to stay up to date

CDP Website
[\[hawaiicounty.gov/vision\]](http://hawaiicounty.gov/vision)

County of Hawai'i Zoning & Subdivision Codes Update

The County of Hawai'i is initiating a process to analyze, update, and amend the Zoning & Subdivision Codes (Chapters 25 and 23) of the 1983 Hawai'i County Code.

The purpose of the update is to implement the general plan and community development plans, provide for more predictability, increase consistency, incorporate best practices in land use and zoning, promote desirable and equitable development, and meet the needs of the Hawai'i Island community.

Check out the website to participate in our Virtual Open House through Sunday, Nov 13th:

Code Update Website
[\[cohcodeupdate.com\]](http://cohcodeupdate.com)

Hawai'i County Financial Empowerment Center (FEC)

Professionally trained FEC Counselors provide free one-on-one financial counseling for their clients, helping to navigate complex financial challenges and choices around:

- Taking control of debt
- Improving credit
- Building savings
- Creating and sticking to a budget
- Finding safe and affordable financial products
- Connection to other services based on your needs

Hawai'i County has partnered with Hawaiian Community Assets and Hawai'i First Federal Credit Union to provide this free service

Office of Housing and Community Development Website
[\[https://www.hawaiicounty.gov/departments/office-of-housing/\]](https://www.hawaiicounty.gov/departments/office-of-housing/)



Stay Connected

County of Hawai'i Planning Department
Community Planning

Website: hawaiicounty.gov/vision



If you are interested in being featured in our Community Planning Newsletter, please feel free to contact us at cdp@hawaiicounty.gov. We'd love to hear from you!